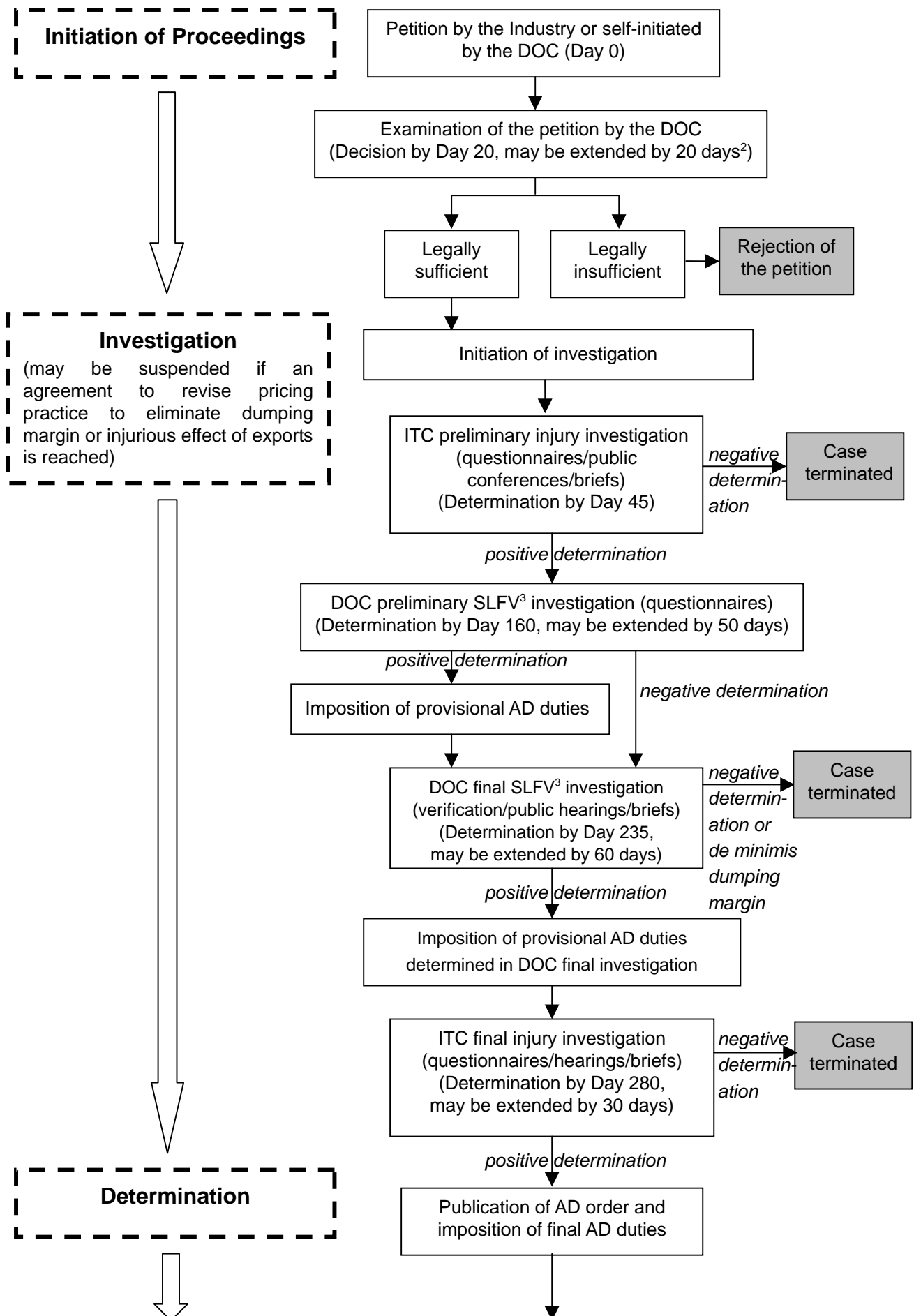
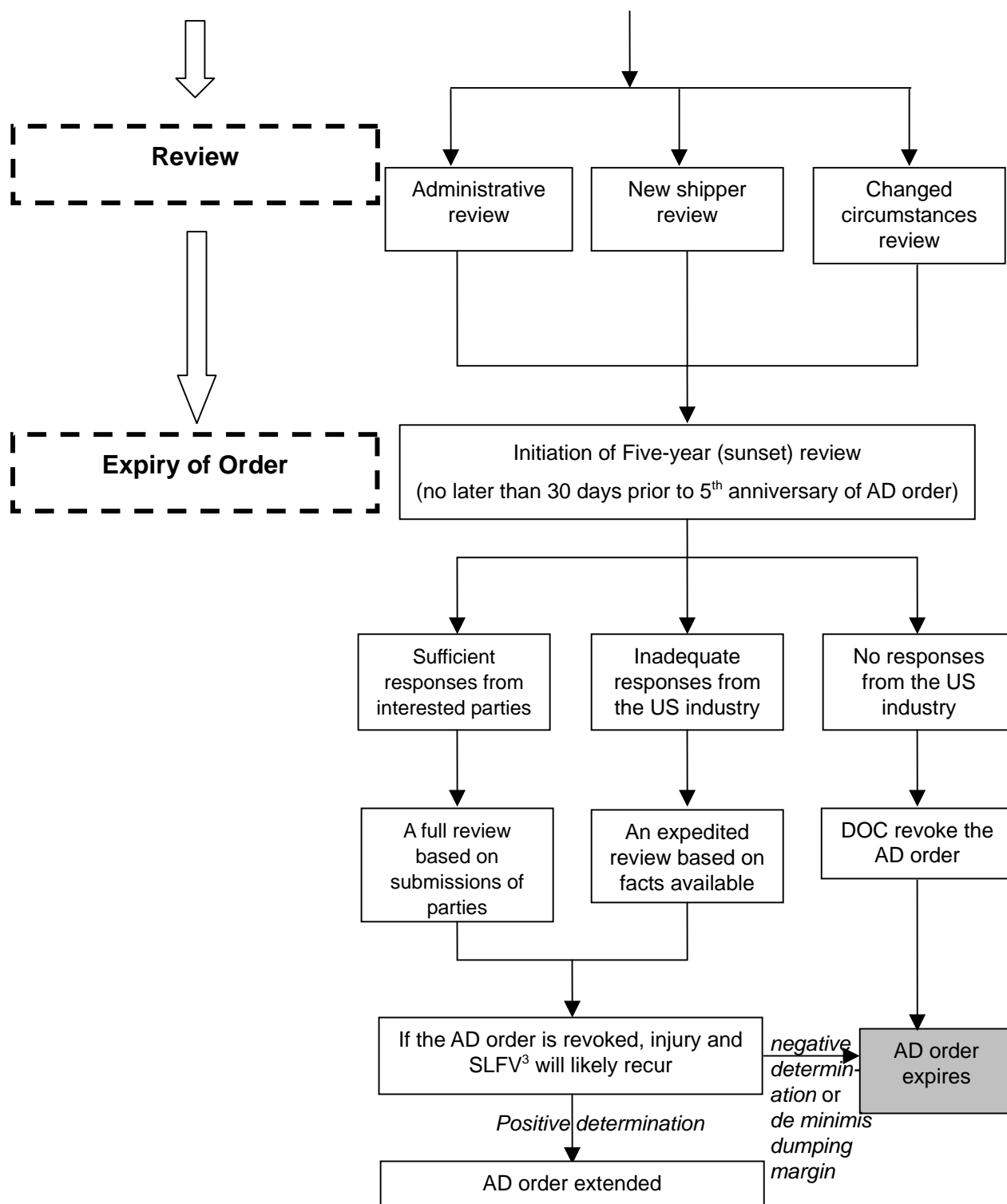


Flow Chart of US' Anti-dumping Proceedings¹





1. While every effort is made to ensure the accuracy of the above information, the Department cannot guarantee this to be so and will not be held liable for any reliance placed on the same. Please refer to the US Tariff Act of 1930 (<https://www.govinfo.gov/content/pkg/COMPS-8183/pdf/COMPS-8183.pdf>), 19 CFR Ch. II Part 207 and 19 CFR Ch. III Part 351 of the US Code of Federal Regulations (<https://www.govinfo.gov/content/pkg/CFR-2014-title19-vol3/pdf/CFR-2014-title19-vol3.pdf>) or seek legal advice for clarification of the US antidumping proceedings whenever necessary.
2. DOC may extend the time allowed for it to initiate an investigation from 20 days to up to 40 days after a petition is filed if the extra time is needed to determine industry support for the petition. In the event of such extension, the deadline for all following dates would be increased by the amount of the extension.
3. "SLFV" stands for "sales at less than fair value".